

SPECIFICATION

ELECTRICAL:

ELE ☐ 1 x 30 Amp 220/240 VAC, 50Hz SINGLE PHASE LINE FOR WATER TRANSFER PUMP TREADMILL DRIVE & HEATER.

IMPORTANT:

ALL ELECTRICAL SUPPLY LINES MUST BE PROTECTED BY, AN "ELCB"(EARTH LEAKAGE CIRCUIT BREAKER) IN ACCORDANCE WITH LOCAL AND NATIONAL ELECTRICAL CODES.

NORTH AMERICAN:

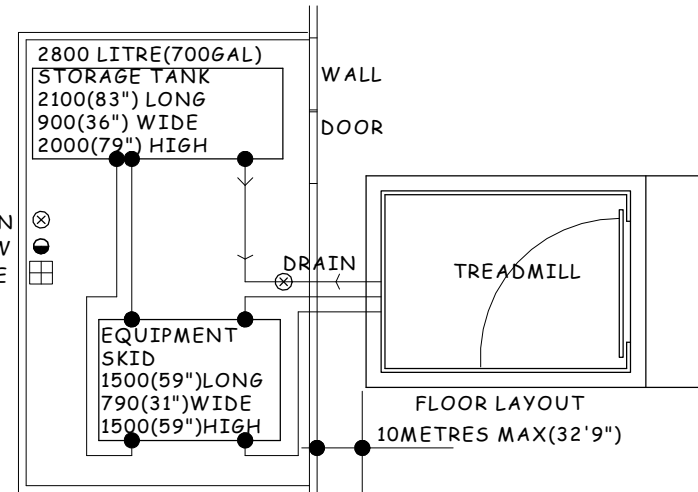
1 x 30 Amp 220/240 VAC, 60Hz SINGLE PHASE LINE FOR WATER TRANSFER PUMP TREADMILL DRIVE & HEATER.

PLUMBING:

- CW ● 15NB(1/2")COLD WATER SUPPLY AT, 3 TO 7 BAR(44-100PSI) FOR AUTOMATIC WATER TOP-UP OF STORAGE TANK.
 ⊗ 50NB(2") TRAPPED DRAIN FOR CONNECTION TO TREADMILL BASE AND STORAGE TANK OVERFLOW.
 ⊗ 50NB(2") TRAPPED DRAIN IN-FLOOR OF TREADMILL ROOM FOR WATER DRAINAGE RECOMMENDED.

PERFORMANCE SPECIFICATION:

VARIABLE SPEED TREADMILL- MIN. SPEED 0,9kph(0.6mph)
 MAX SPEED 15kph (9.3mph)
 CAPACITY 250 kg (550LBS) PERSON RUNNING/WALKING.
 TREAD MILL BELT SURFACE AREA 750mm(29.5") x 1400mm(55")



NOTE: EQUIPMENT TOWER AND STORAGE TANK LAYOUT CAN VARY TO SUIT APPLICATION.

NOTE: TREADMILL WEIGHT EMPTY 450KG(990LBS) APPROX. WITH WATER 2600KG(5720LBS) APPROX.

KOSLEX PTY LTD

NOBLE PARK VICTORIA AUSTRALIA

ph.+61 3 9999 7978 www.koslex.com fax.+61 3 9701 5282

PHYSIO 1611 TREADMILL SPECIFICATION

NOTE! THIS DRAWING IS TO BE USED AS A GUIDE ONLY AND IS SUBJECT TO CHANGE WITHOUT NOTICE

SCALE: 1:25

DRG No.TM-INST-007
 ISSUED 13 SEPT 2013