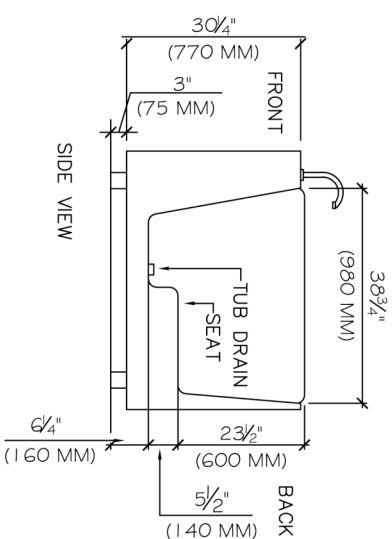
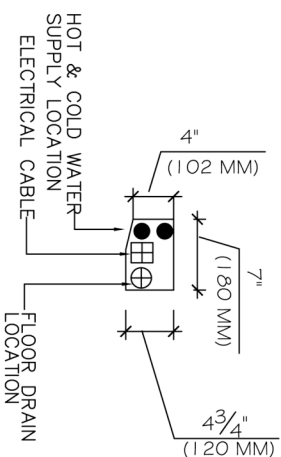
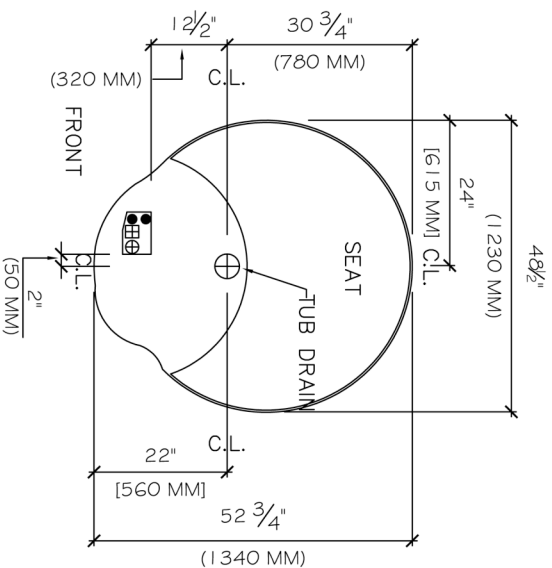


LAYOUT Specifications

HYDROTONE GEISHA PETITE TUB

NOTE: THIS IS TO BE USED AS A GUIDE ONLY. THE MANUFACTURER RESERVES THE RIGHT TO AMEND SPECIFICATIONS WITHOUT PRIOR NOTICE



PLUMBING:

- 3/4" HOT & COLD WATER SUPPLY LINES
- MAXIMUM PRESSURE: 145 PSI
- 2" FLOOR DRAIN
- 1/2" HOT & COLD WATER SUPPLY LINES & 1 1/2" DRAIN WILL RESULT IN SLOW FILL

- **IMPORTANT:** LOCATE LINES & DRAIN AS SHOWN IN PLAN

ELECTRICAL:

- 120 VOLT, 60 HZ, 11 AMP, 1250 W (15 AMP CIRCUIT) OR
- 230 VOLT, 50 HZ, 4-8 AMP, 800 W (10 AMP CIRCUIT)
- CONNECT ONLY TO A CIRCUIT PROTECTED BY A CLASS "A" (GFCI) GROUND FAULT CIRCUIT INTERRUPTER
- GFCI INTERNATIONALLY KNOWN AS (ELCB)
- EARTH LEAKAGE CIRCUIT BREAKER

LEGEND:



FLOOR LINES AND FLOOR DRAIN ELECTRICAL.

NOTE:

- INSTALL IN ACCORDANCE WITH LOCAL AND NATIONAL CODE REQUIREMENTS
- SEE "GEISHA" TUB INSTALLATION & USER GUIDE (PROVIDED) BEFORE COMMENCING INSTALLATION OF TUB

Updated: 20 October 2004