

SPECIFICATION

ELECTRICAL:

ELE ☐ 2 x 25 Amp 220/240 Vac, 50Hz SINGLE PHASE LINES FOR THE WATER TRANSFER PUMP/HEATER.
 1 x 2 Amp MAX DRAW, 220/240 Vac, 50Hz SINGLE PHASE LINE FOR THE WATER DOSING SYSTEM.

IMPORTANT:

ALL ELECTRICAL SUPPLY LINES **MUST** BE PROTECTED BY, AN "ELCB"(EARTH LEAKAGE CIRCUIT BREAKER) IN ACCORDANCE WITH LOCAL AND NATIONAL ELECTRICAL CODES.

NORTH AMERICAN:

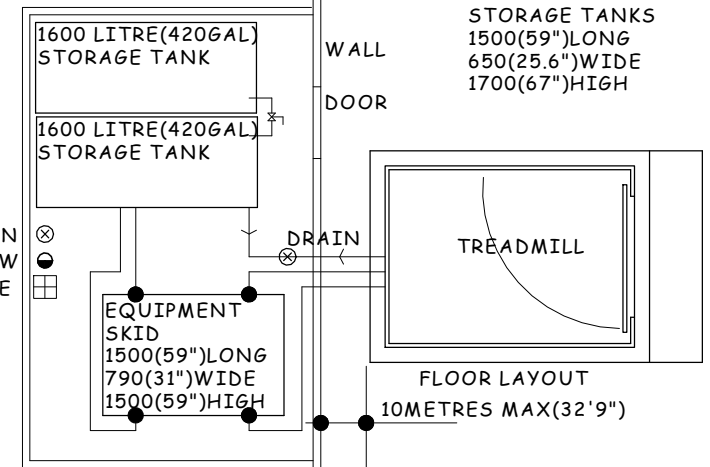
2 x 25 Amp 220/240 Vac, 60Hz SINGLE PHASE LINES FOR PUMP/HEATER
 1 x 2 Amp MAX DRAW, 220/240 Vac, 60Hz SINGLE PHASE LINE FOR WATER DOSING SYSTEM. PROTECTED VIA A CLASS "A" GFCI - GROUND FAULT CIRCUIT INTERRUPTER.

PLUMBING:

- CW ● 15NB(1/2") COLD WATER SUPPLY AT, 3 TO 7 BAR(44-100PSI) FOR AUTOMATIC WATER TOP-UP OF STORAGE TANK.
- ⊗ 50NB(2") TRAPPED DRAIN FOR CONNECTION TO TREADMILL BASE AND STORAGE TANK OVERFLOW.
- ⊗ 50NB(2") TRAPPED DRAIN IN-FLOOR OF TREADMILL ROOM FOR WATER DRAINAGE RECOMMENDED.

PERFORMANCE SPECIFICATION:

VARIABLE SPEED TREADMILL- MIN. SPEED 0.9kph(0.6mph)
 MAX SPEED 15kph (9.3mph)
 CAPACITY 250 kg (550LBS) PERSON RUNNING/WALKING.
 TREAD MILL BELT SURFACE AREA 750mm(29.5") x 1400mm(55")



NOTE: EQUIPMENT TOWER AND STORAGE TANK LAYOUT CAN VARY TO SUIT APPLICATION.

NOTE: TREADMILL WEIGHT EMPTY 450KG(990LBS) APPROX. WITH WATER 2600KG(5720LBS) APPROX.

HYDROCO (AUST) PTY LTD
 SEAFORD VICTORIA AUSTRALIA

SUSPENSE PHYSIO model 1611 with TREADMILL SPECIFICATION

ph.+61 3 8770 4000 www.hydroco.com fax.+61 3 9773 6122

NOTE! THIS DRAWING IS TO BE USED AS A GUIDE ONLY AND IS SUBJECT TO CHANGE WITHOUT NOTICE

SCALE: 1:25 DRG No.TM-INST-004

26 MAR 2010